

TILTING DISC CHECK VALVE



NON-SLAM CLOSING INTELLIGENT DESIGN VERSATILE OPERATION

DESCRIPTIONS

Valves are manufactured and tested in accordance with EN 12334 PN 10/16/25, TIS 383 PN 6/10/16. MSS-SP 71 class 125/250, and also meet the requirements of AWWA C508. The tilting disc and 2 pieces bodies designed check valve accomplishes full flow opening by having the disc pivot or tilt in the flow media. The opening stroke range is much less than that of the conventional swing check valves, therefore reduces opening and closing time critical to controlling flow reversal and reducing water hammer. The full flow area with lower headloss ensure SCI tilting disc check valve will operate with the highest efficiency and durability.

FEATURES

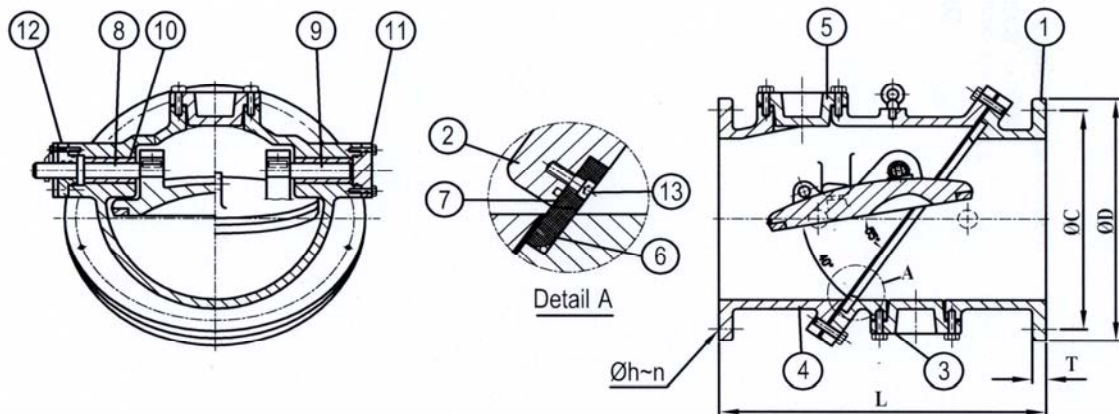
- Sizes are available from DN 150 mm. - DN 1800 mm. (6"-72")
- Flange drilling to suit ANSI B16.1, EN 1092, BS 10, ANSI B16.5, AS 2129 and JIS.
- Optional accessories : Signal switch, By-pass, Hydraulic cylinder (top / bottom / side mounted)



APPLICATIONS

Suitable for all type of water, air and steam 121 °C or 250 °F (For higher temperature, consult factory).

DESIGN SPECIFICATIONS



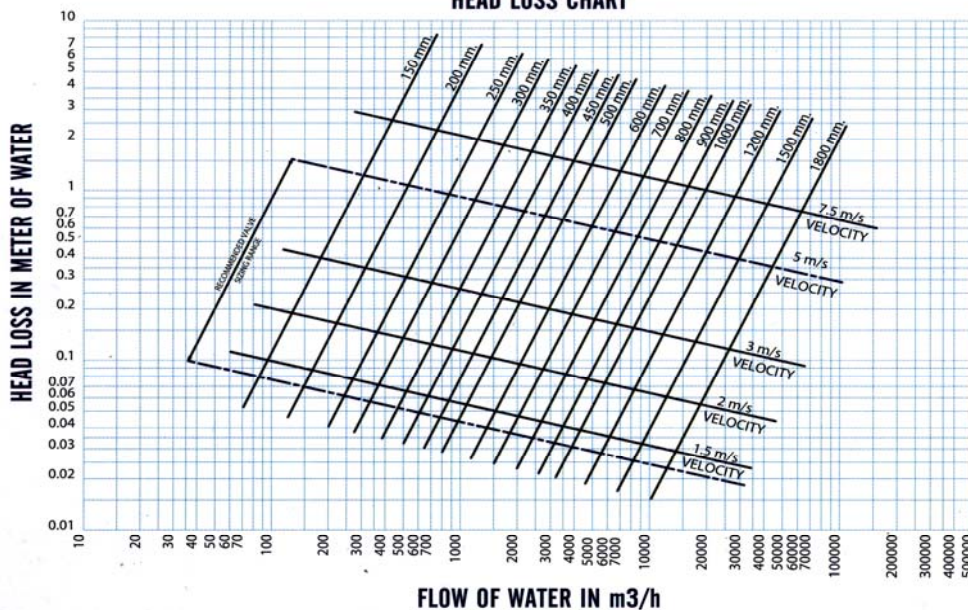
INSTALLATION DIMENSIONS

SIZE Ød	L	ANSI B16.1 CL. 125				
		ØD	ØC	Øh	n	T
6	15	11	9 1/2	7/8	8	1
8	19 1/2	13 1/2	11 3/4	7/8	8	1 1/8
10	24 1/2	16	14 1/4	1	12	1 3/16
12	24	19	17	1	12	1 1/4
14	30	21	18 3/4	1 1/8	12	1 3/8
16	30	23 1/2	21 1/4	1 1/8	16	1 7/16
20	32	27 1/2	25	1 1/4	20	1 11/16
24	38	32	29 1/2	1 3/8	20	1 7/8
30	52	38 3/4	36	1 3/8	28	2 1/8
36	59 1/2	46	42 3/4	1 5/8	32	2 3/8
42	62 1/2	53	49 1/2	1 5/8	36	2 5/8
48	65	59 1/2	56	1 5/8	44	2 3/4
54	78	66 1/4	62 3/4	2	44	3
60	87	73	69 1/4	2	52	3 1/8
72	105	86 1/2	82 1/2	2	60	3 1/2

MATERIALS OF CONSTRUCTION

NO	PARTS	MATERIAL	ASTM DESIGNATION	BS SPEC
1	Body A	Cast Iron	A 126 Class B	EN 1561-EN-GJL-250
2	Disc	Ductile Iron	A 536 Gr.65-45-12	EN 1561-EN-GJL-500-7
3	End Plate(A)	Cast Iron	A 126 Class B	EN 1561-EN-GJL-250
4	Body B	Cast Iron	A 126 Class B	EN 1561-EN-GJL-250
5	End Plate(B)	Cast Iron	A 126 Class B	EN 1561-EN-GJL-250
6	Body Seat Ring	Stainless Steel	A 276 Type 304	970 Grade 304
7	Disc Seat Ring	Stainless Steel	A 276 Type 304	970 Grade 304
8	Hinge Pin A	Stainless Steel	A 276 Type 304	970 Grade 304
9	Hinge Pin B	Stainless Steel	A 276 Type 304	970 Grade 304
10	Sleeve	Bronze	B 62	1400 LG.2
11	End Plate(C)	Cast Iron	A 126 Class B	EN 1561-EN-GJL-250
12	End Plate(D)	Cast Iron	A 126 Class B	EN 1561-EN-GJL-250
13	Socket Head Bolt	Stainless Steel	A 276 Type 304	970 Grade 304

HEAD LOSS CHART



Siam Cast Iron Works Co.,Ltd.

Factory: 1/12 Moo 2, Samutsakorn Industrial Estate, Soi 7,
Rama II Road, Muang, Samutsakorn 74000, Thailand

Tel: (6634)829-200 Fax: (6634)829-222 E-mail: sci@scivalve.com



ISO 9001
File No. A4845